

[Home](#) / [SERVO gears](#) / Low backlash planetary gearboxes

SERVO Low backlash planetary gearboxes

The low backlash planetary gearboxes for high acceleration torques. The coaxial gearboxes are suitable for universal use thanks to their particularly compact design, symmetrical construction and adaptable motor connection.



MPR

Coaxial gearbox with solid shaft without key

Ratios:	i	[-]	3,0 - 100,0
Max. acceleration torque:	$T_{2\maxzul}$	[Nm]	44 - 1900
Nominal torque on output shaft:	T_{2Nzul}	[Nm]	29 - 1000
Max. backlash:	j	[arcmin]	1 - 8
Max. input speed:	$N_{1\maxzul}$	[min ⁻¹]	3500 - 6000

The operating mode is S5. Please contact us if you intend to use other operating modes.

[Catalogues and maintenance instructions](#)

[2D and 3D data](#)

[Inquiry form](#)

Do you have individual requirements?

We have the right customer-specific solution for you. We look forward to hearing from you.

[Customized solution](#)



MPG

Coaxial gearbox with flanged shaft

Ratios:	i	[-]	4,0 - 100,0
Max. acceleration torque:	$T_{2\maxzul}$	[Nm]	44 - 1900
Nominal torque on output shaft:	T_{2Nzul}	[Nm]	29 - 1000
Max. backlash:	j	[arcmin]	1 - 8
Max. input speed:	$N_{1\maxzul}$	[min ⁻¹]	3500 - 6000

The operating mode is S5. Please contact us if you intend to use other operating modes.

[Catalogues and maintenance instructions](#)

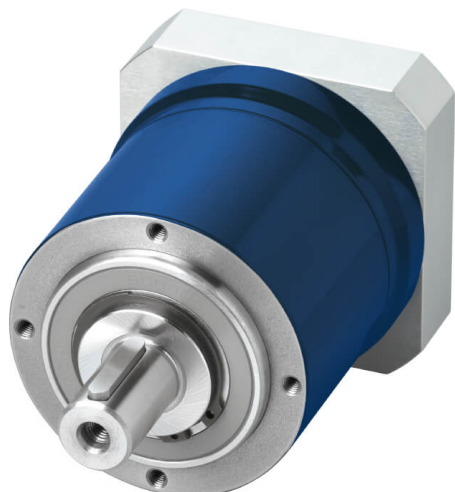
[2D and 3D data](#)

[Inquiry form](#)

Do you have individual requirements?

We have the right customer-specific solution for you. We look forward to hearing from you.

[Customized solution](#)



MPL

Coaxial gearbox with solid shaft with key

Ratios:	i	[-]	3,0 - 100,0
Max. acceleration torque:	$T_{2\text{maxzul}}$	[Nm]	40 - 500
Nominal torque on output shaft:	$T_{2\text{Nzul}}$	[Nm]	25 - 1000
Max. backlash:	j	[arcmin]	8 - 10
Max. input speed:	$N_{1\text{maxzul}}$	[min ⁻¹]	4500 - 8000

The operating mode is S5. Please contact us if you intend to use other operating modes.

[Catalogues and maintenance instructions](#)

[2D and 3D data](#)

[Inquiry form](#)

Do you have individual requirements?

We have the right customer-specific solution for you. We look forward to hearing from you.

[Customized solution](#)