

# **New sizes now available for the MPR and MPG models!**

**HIGH TORQUE!** Max. acceleration torque  $T_{2\text{ bzul}} = 4600 \text{ Nm}$

[Low backlash planetary gearboxes](#)

## **Highest precision in every detail**

[Know-how](#)

## **Future in motion**

At VOGEL Antriebstechnik, we develop, produce and distribute innovative and reliable gearing technology for industrial requirements.

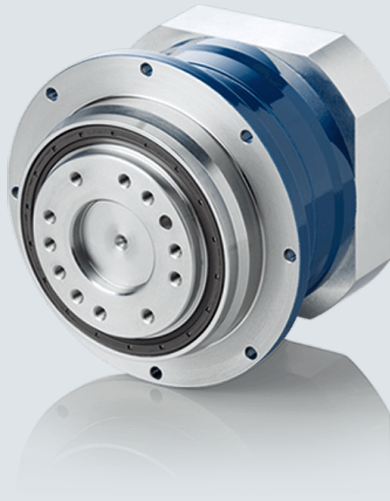
[More](#)

[Home](#)

## **Your partner for everything from standard gearboxes to customer-specific drives in top product quality**

We at VOGEL have an objective: to increase the efficiency of your machines and plant significantly and sustainably. To achieve this, we develop and manufacture high-quality precision gearboxes, reliable drive systems and custom drive solutions for industrial applications. All VOGEL products and solutions are synonymous with high precision, durability and high power density. Successful for more than 70 years, family-managed in the third generation.

## Three product lines - one quality.



### **SERVO gears**

The specialists for modern servo drives. With high speed, short cycle times and low backlash.

[More](#)



### **MECHANICAL gears**

The all-rounders. For all applications that require efficiency and reliability.

[More](#)

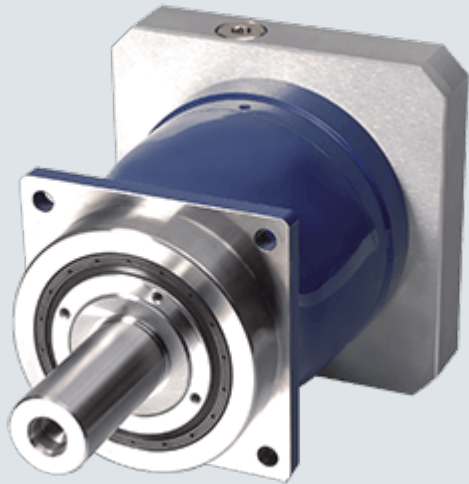


### **INDUSTRIAL gears**

The sturdy ones. With high torques and long life time for high performance requirements.

[More](#)

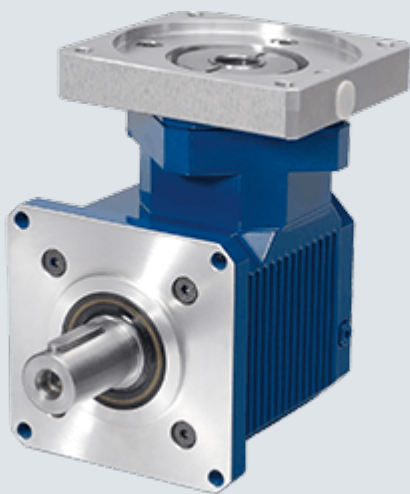
## **The VOGEL standard product range - high quality, universal, comprehensive**



### **Low backlash planetary gearboxes**

Universal thanks to compact design, symmetrical construction and adaptable motor connection

[More](#)



### **Servo spiral bevel gearboxes**

For toughest demands in dynamics Free choice of mounting position thanks to a flexible lubrication system

[More](#)



## **Industrial-Planetary gearboxes**

Compact drive technology for applications where especially high power densities are required

[More](#)



## **Spiral bevel gearboxes**

For universal use, easy to install, adaptable and constructed suitable for machines

[More](#)



## **Spiral bevel planetary gearboxes**

Compact drive technology for applications where especially high power densities are required

[More](#)



## **Bevel helical gearboxes**

In eight sizes - for universal use. High power density, available in different versions

[More](#)



## **Rack & pinion drives**

Combination of low backlash planetary gearboxes with high-precision pinions and toothed racks. Cooperation between VOGEL and WMH Herion

[More](#)

## **6 added values for your benefit with VOGEL Antriebstechnik**

### **Wide range of products**

The universal VOGEL product range with nominal output torques of between 10 and 50,000 NM offers the right solution for every requirement. Fast and efficient.

### **Quality and precision**

VOGEL manufacturing know-how guarantees noise- and torque-optimised gearing

technology. With maximum precision, quality and durability.

## **Consultation and problem-solving expertise**

VOGEL's consultation and problem-solving expertise concentrates uncompromisingly on your specific drive task with the focus on efficiency. That's a promise.

## **Flexibility**

Short paths and a passion for fast implementation make customer-oriented flexibility and on-schedule availability possible extremely quickly.

## **Customized products**

The unique VOGEL modular range combined with sound development expertise makes customer-specific solutions possible. Fast and efficient from batch size 1.

## **Made in Germany**

Our own state-of-the-art production facilities and highly qualified employees guarantee the greatest possible product quality made in Germany.

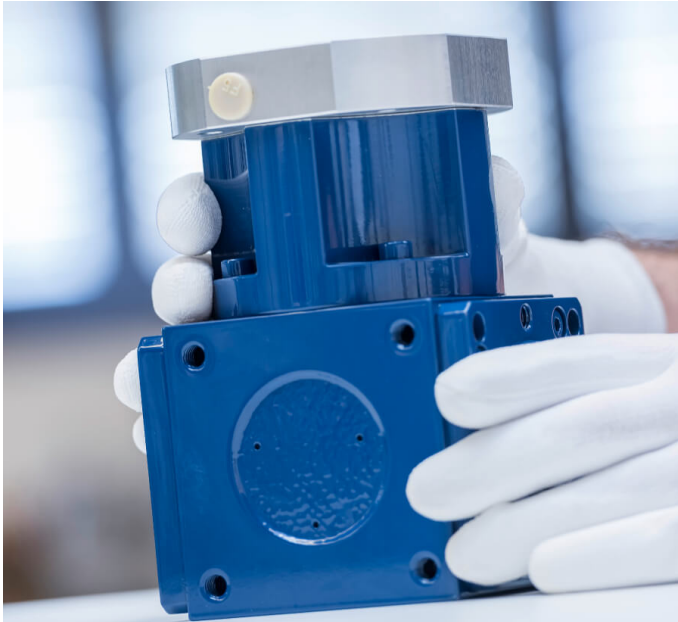
[Find out more](#)

## **We know your industry!**

We at VOGEL Antriebstechnik think from the customer's perspective – intensive orientation towards industry and solutions are the expression of our close customer relations. We are familiar with your industry-specific requirements.

[Find out more](#)





**KNOW-HOW**



**SERVICE**



**CAREER**



**COMPETENCE SINCE 1947**

**We look forward to hearing from you.**

Do you have questions about our products or would you like personal consultation?  
You can find the right contact person for you here.

[Go to contact persons](#)



