

This site uses cookies. You can adjust the respective settings in your browser. By continuing to browse the site, we assume your consent to the use of cookies. You can find information on how to deactivate cookies [here](#).

OK



[Home](#) / [Gearbox types](#) / Low backlash planetary gearboxes

Low backlash planetary gearboxes

The low backlash planetary gearboxes for high acceleration torques. The coaxial gearboxes are suitable for universal use thanks to their particularly compact design, symmetrical construction and adaptable motor connection.



MPR

Coaxial gearbox with solid shaft without key

Ratios:	i	[-]	3,0 - 100,0
Max. acceleration torque:	$T_{2\text{maxzul}}$	[Nm]	44 - 4600
Nominal torque on output shaft:	$T_{2\text{Nzul}}$	[Nm]	29 - 2600
Max. backlash:	j	[arcmin]	1 - 8
Max. input speed:	$N_{1\text{maxzul}}$	[min ⁻¹]	3500 - 6000

The operating mode is S5. Please contact us if you intend to use other operating modes.

[Catalogues and maintenance instructions](#)

[2D and 3D data](#)

[Inquiry form](#)

Do you have individual requirements?

We have the right customer-specific solution for you. We look forward to hearing from you.

[Customized solution](#)



MPG

Coaxial gearbox with flanged shaft

Ratios:	i	[-]	4,0 - 100,0
Max. acceleration torque:	$T_{2\maxzul}$	[Nm]	44 - 4500
Nominal torque on output shaft:	T_{2Nzul}	[Nm]	29 - 3250
Max. backlash:	j	[arcmin]	1 - 8
Max. input speed:	$N_{1\maxzul}$	[min ⁻¹]	3500 - 6000

The operating mode is S5. Please contact us if you intend to use other operating modes.

[Catalogues and maintenance instructions](#)

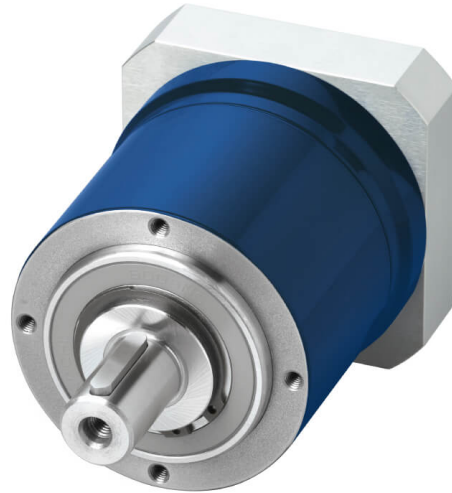
[2D and 3D data](#)

[Inquiry form](#)

Do you have individual requirements?

We have the right customer-specific solution for you. We look forward to hearing from you.

[Customized solution](#)



MPL

Coaxial gearbox with solid shaft with key

Ratios:	i	[-]	3,0 - 100,0
Max. acceleration torque:	$T_{2maxzul}$	[Nm]	40 - 500
Nominal torque on output shaft:	T_{2Nzul}	[Nm]	25 - 360
Max. backlash:	j	[arcmin]	8 - 10
Max. input speed:	$N_{1maxzul}$	[min ⁻¹]	4500 - 8000

The operating mode is S5. Please contact us if you intend to use other operating modes.

[Catalogues and maintenance instructions](#)

[2D and 3D data](#)

[Inquiry form](#)

Do you have individual requirements?

We have the right customer-specific solution for you. We look forward to hearing from you.

[Customized solution](#)

Discover our three product lines

By sub-dividing our gearbox range into three product lines, we are creating more transparency and making selection easier for you. Experience our expertise³, which is setting new benchmarks every data in terms of innovative and reliable technology.

[SERVO gears](#)

[MECHANICAL gears](#)

[INDUSTRIAL gears](#)

We look forward to hearing from you.

Do you have questions about our products or would you like personal consultation? You can find the right contact person for you here.

[Go to contact persons](#)

© 2019 Wilhelm Vogel GmbH