

Spiral bevel gearboxes

VOGEL spiral bevel gearboxes are suitable for universal use thanks to their machine-friendly construction and adaptability. The efficient and reliable top performer is available in different versions. Like all VOGEL spiral bevel gearboxes, they are manufactured using the modern production method of ground circular arc teeth according to Klingelnberg. For customers, this means greater tooth quality and precision as well as even faster delivery times.



L

Angular gearbox with solid shaft with key

| | | | |
|---------------------------------|----------------|----------------------|------------|
| Ratios: | i | [-] | 1.0 - 6.0 |
| Max. acceleration torque: | $T_{2\maxzul}$ | [Nm] | 27 - 15300 |
| Nominal torque on output shaft: | T_{2Nzul} | [Nm] | 10 - 5700 |
| Max. backlash: | j | [arcmin] | 10, 7, [4] |
| Max. input speed: | $N_{1\maxzul}$ | [min ⁻¹] | up to 4500 |

The operating mode is S5. Please contact us if you intend to use other operating modes.

[Catalogues and maintenance instructions](#)

[2D and 3D data](#)

[Inquiry form](#)

Do you have individual requirements?

We have the right customer-specific solution for you. We look forward to hearing from you.

[Customized solution](#)



ML

Angular gearbox with solid shaft with key

| | | | |
|---------------------------------|----------------|----------------------|------------|
| Ratios: | i | [-] | 1.0 - 6.0 |
| Max. acceleration torque: | $T_{2\maxzul}$ | [Nm] | 27 - 15300 |
| Nominal torque on output shaft: | T_{2Nzul} | [Nm] | 10 - 5700 |
| Max. backlash: | j | [arcmin] | 10, 7, [4] |
| Max. input speed: | $N_{1\maxzul}$ | [min ⁻¹] | up to 5000 |

The operating mode is S5. Please contact us if you intend to use other operating modes.

[Catalogues and maintenance instructions](#)

[2D and 3D data](#)

[Inquiry form](#)

Do you have individual requirements?

We have the right customer-specific solution for you. We look forward to hearing from you.

[Customized solution](#)



H

Angular gearbox with hollow shaft with keyway

| | | | |
|---------------------------------|----------------|----------------------|------------|
| Ratios: | i | [-] | 1.0 - 6.0 |
| Max. acceleration torque: | $T_{2\maxzul}$ | [Nm] | 27 - 15300 |
| Nominal torque on output shaft: | T_{2Nzul} | [Nm] | 10 - 5700 |
| Max. backlash: | j | [arcmin] | 10, 7, [4] |
| Max. input speed: | $N_{1\maxzul}$ | [min ⁻¹] | up to 4500 |

The operating mode is S5. Please contact us if you intend to use other operating modes.

[Catalogues and maintenance instructions](#)

[2D and 3D data](#)

[Inquiry form](#)

Do you have individual requirements?

We have the right customer-specific solution for you. We look forward to hearing from you.

[Customized solution](#)



MH

Angular gearbox with hollow shaft with keyway

| | | | |
|---------------------------------|----------------|----------------------|------------|
| Ratios: | i | [-] | 1.0 - 6.0 |
| Max. acceleration torque: | $T_{2\maxzul}$ | [Nm] | 18 - 15300 |
| Nominal torque on output shaft: | T_{2Nzul} | [Nm] | 10 - 5700 |
| Max. backlash: | j | [arcmin] | 10, 7, [4] |
| Max. input speed: | $N_{1\maxzul}$ | [min ⁻¹] | up to 5000 |

The operating mode is S5. Please contact us if you intend to use other operating modes.

[Catalogues and maintenance instructions](#)

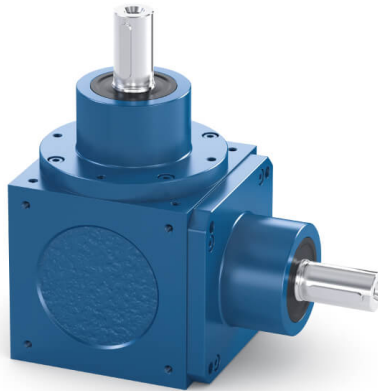
[2D and 3D data](#)

[Inquiry form](#)

Do you have individual requirements?

We have the right customer-specific solution for you. We look forward to hearing from you.

[Customized solution](#)



K

Angular gearbox with solid shaft with key

| | | | |
|---------------------------------|----------------|----------------------|-------------|
| Ratios: | i | [-] | 1.0 - 6.0 |
| Max. acceleration torque: | $T_{2\maxzul}$ | [Nm] | 27 - 3240 |
| Nominal torque on output shaft: | T_{2Nzul} | [Nm] | 10 - 1100 |
| Max. backlash: | j | [arcmin] | 10, 7, [4] |
| Max. input speed: | $N_{1\maxzul}$ | [min ⁻¹] | 3000 - 4500 |

The operating mode is S5. Please contact us if you intend to use other operating modes.

[Catalogues and maintenance instructions](#)

[2D and 3D data](#)

[Inquiry form](#)

Do you have individual requirements?

We have the right customer-specific solution for you. We look forward to hearing from you.

[Customized solution](#)



MK

Angular gearbox with solid shaft with key

| | | | |
|---------------------------------|----------------|----------------------|-------------|
| Ratios: | i | [-] | 1.0 - 6.0 |
| Max. acceleration torque: | $T_{2\maxzul}$ | [Nm] | 27 - 3240 |
| Nominal torque on output shaft: | T_{2Nzul} | [Nm] | 10 - 1100 |
| Max. backlash: | j | [arcmin] | 10, 7, [4] |
| Max. input speed: | $N_{1\maxzul}$ | [min ⁻¹] | 3000 - 4500 |

The operating mode is S5. Please contact us if you intend to use other operating modes.

[Catalogues and maintenance instructions](#)

[2D and 3D data](#)

[Inquiry form](#)

Do you have individual requirements?

We have the right customer-specific solution for you. We look forward to hearing from you.

[Customized solution](#)



LV

Angular gearbox with solid shaft with key

| | | | |
|---------------------------------|----------------------|-----------------------|-------------|
| Ratios: | i | [-] | 1.0 - 6.0 |
| Max. acceleration torque: | $T_{2\text{maxzul}}$ | [Nm] | 27 - 3240 |
| Nominal torque on output shaft: | $T_{2\text{Nzul}}$ | [Nm] | 10 - 1100 |
| Max. backlash: | j | [arcmin] | 10, 7, [4] |
| Max. input speed: | $N_{1\text{maxzul}}$ | [min^{-1}] | 3000 - 4500 |

The operating mode is S5. Please contact us if you intend to use other operating modes.

[Catalogues and maintenance instructions](#)

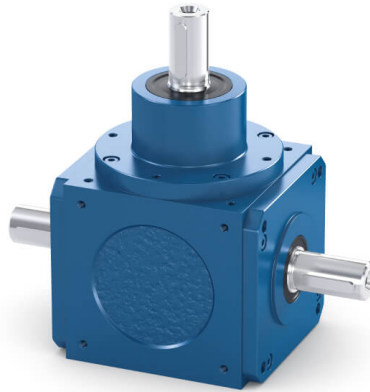
[2D and 3D data](#)

[Inquiry form](#)

Do you have individual requirements?

We have the right customer-specific solution for you. We look forward to hearing from you.

[Customized solution](#)



LS

Angular gearbox with solid shaft with key

| | | | |
|---------------------------------|----------------------|----------------------|---------------|
| Ratios: | i | [-] | 1/1.5 - 1/2.0 |
| Max. acceleration torque: | $T_{2\text{maxzul}}$ | [Nm] | 45 - 2160 |
| Nominal torque on output shaft: | $T_{2\text{Nzul}}$ | [Nm] | 23 - 720 |
| Max. backlash: | j | [arcmin] | 10, 7, [4] |
| Max. input speed: | $N_{1\text{maxzul}}$ | [min ⁻¹] | 3000 - 4500 |

The operating mode is S5. Please contact us if you intend to use other operating modes.

[Catalogues and maintenance instructions](#)

[2D and 3D data](#)

[Inquiry form](#)

Do you have individual requirements?

We have the right customer-specific solution for you. We look forward to hearing from you.

[Customized solution](#)

Discover our three product lines

By sub-dividing our gearbox range into three product lines, we are creating more transparency and making selection easier for you. Experience our expertise³, which is setting new benchmarks every data in terms of innovative and reliable technology.

[SERVO gears](#)

[MECHANICAL gears](#)

We look forward to hearing from you.

Do you have questions about our products or would you like personal consultation? You can find the right contact person for you here.

[Go to contact persons](#)