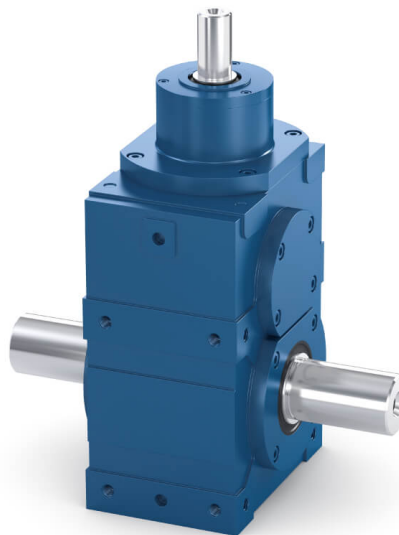


MECHANICAL Bevel helical gearboxes

VOGEL bevel helical gearboxes combine high power density with extremely smooth running. There are different versions available in eight sizes, making them suitable for universal use. Like all VOGEL spiral bevel gearboxes, they are manufactured using the modern production method of ground circular arc teeth according to Klingelnberg. For customers, this means greater tooth quality and precision as well as even faster delivery times.



KS

Angular gearbox with solid shaft with key

Ratios:	i	[-]	6,0 - 48,0
Max. acceleration torque:	$T_{2\maxzul}$	[Nm]	176 - 5760
Nominal torque on output shaft:	T_{2Nzul}	[Nm]	90 - 2760
Max. backlash:	j	[arcmin]	10, 4
Max. input speed:	$N_{1\maxzul}$	[min ⁻¹]	3000 - 4500

The operating mode is S5. Please contact us if you intend to use other operating modes.

[Catalogues and maintenance instructions](#)

[2D and 3D data](#)

[Inquiry form](#)

Do you have individual requirements?

We have the right customer-specific solution for you. We look forward to hearing from you.

[Customized solution](#)



MKS

Angular gearbox with solid shaft with key

Ratios:	i	[-]	6,0 - 48,0
Max. acceleration torque:	$T_{2\maxzul}$	[Nm]	176 - 5760
Nominal torque on output shaft:	T_{2Nzul}	[Nm]	90 - 2760
Max. backlash:	j	[arcmin]	10, 4
Max. input speed:	$N_{1\maxzul}$	[min ⁻¹]	3000 - 4500

The operating mode is S5. Please contact us if you intend to use other operating modes.

[Catalogues and maintenance instructions](#)

[2D and 3D data](#)

[Inquiry form](#)

Do you have individual requirements?

We have the right customer-specific solution for you. We look forward to hearing from you.

[Customized solution](#)



KSH

Angular gearbox with hollow shaft with keyway

Ratios:	i	[-]	1,0 - 6,0
Max. acceleration torque:	$T_{2\maxzul}$	[Nm]	27 - 3240
Nominal torque on output shaft:	T_{2Nzul}	[Nm]	10 - 1100
Max. backlash:	j	[arcmin]	10, 7, [4]
Max. input speed:	$N_{1\maxzul}$	[min ⁻¹]	3000 - 4500

The operating mode is S5. Please contact us if you intend to use other operating modes.

[Catalogues and maintenance instructions](#)

[2D and 3D data](#)

[Inquiry form](#)

Do you have individual requirements?

We have the right customer-specific solution for you. We look forward to hearing from you.

[Customized solution](#)



MKSH

Angular gearbox with hollow shaft with keyway

Ratios:	i	[-]	1,0 - 6,0
Max. acceleration torque:	$T_{2\maxzul}$	[Nm]	27 - 3240
Nominal torque on output shaft:	T_{2Nzul}	[Nm]	10 - 1100
Max. backlash:	j	[arcmin]	10, 7, [4]
MMax. input speed:	$N_{1\maxzul}$	[min ⁻¹]	3000 - 4500

The operating mode is S5. Please contact us if you intend to use other operating modes.

[Catalogues and maintenance instructions](#)

[2D and 3D data](#)

[Inquiry form](#)

Do you have individual requirements?

We have the right customer-specific solution for you. We look forward to hearing from you.

[Customized solution](#)

Are you looking for further bevel helical gearboxes?

[Overview bevel helical gearboxes](#)