

MECHANICAL Spiral bevel gearboxes

VOGEL spiral bevel gearboxes are suitable for universal use thanks to their machine-friendly construction and adaptability. The efficient and reliable top performer is available in different versions. Like all VOGEL spiral bevel gearboxes, they are manufactured using the modern production method of ground circular arc teeth according to Klingelnberg. For customers, this means greater tooth quality and precision as well as even faster delivery times.



L

Angular gearbox with solid shaft with key

Ratios:	i	[-]	1,0 - 6,0
Max. acceleration torque:	$T_{2\maxzul}$	[Nm]	27 - 3240
Nominal torque on output shaft:	T_{2Nzul}	[Nm]	10 - 1100
Max. backlash:	j	[arcmin]	10, 7, [4]
Max. input speed:	$N_{1\maxzul}$	[min ⁻¹]	3500 - 6000

The operating mode is S5. Please contact us if you intend to use other operating modes.

[Catalogues and maintenance instructions](#)

[2D and 3D data](#)

[Inquiry form](#)

Do you have individual requirements?

We have the right customer-specific solution for you. We look forward to hearing from you.

[Customized solution](#)



ML

Angular gearbox with solid shaft with key

Ratios:	i	[-]	1,0 - 6,0
Max. acceleration torque:	$T_{2\maxzul}$	[Nm]	27 - 3240
Nominal torque on output shaft:	T_{2Nzul}	[Nm]	10 - 1100
Max. backlash:	j	[arcmin]	10, 7, [4]
Max. input speed:	$N_{1\maxzul}$	[min ⁻¹]	3000 - 4500

The operating mode is S5. Please contact us if you intend to use other operating modes.

[Catalogues and maintenance instructions](#)

[2D and 3D data](#)

[Inquiry form](#)

Do you have individual requirements?

We have the right customer-specific solution for you. We look forward to hearing from you.

[Customized solution](#)



H

Angular gearbox with hollow shaft with keyway

Ratios:	i	[-]	1,0 - 6,0
Max. acceleration torque:	$T_{2\maxzul}$	[Nm]	27 - 3240
Nominal torque on output shaft:	T_{2Nzul}	[Nm]	10 - 1100
Max. backlash:	j	[arcmin]	10, 7, [4]
Max. input speed:	$N_{1\maxzul}$	[min ⁻¹]	3000 - 4500

The operating mode is S5. Please contact us if you intend to use other operating modes.

[Catalogues and maintenance instructions](#)

[2D and 3D data](#)

[Inquiry form](#)

Do you have individual requirements?

We have the right customer-specific solution for you. We look forward to hearing from you.

[Customized solution](#)



MH

Angular gearbox with hollow shaft with keyway

Ratios:	i	[-]	1,0 - 6,0
Max. acceleration torque:	$T_{2\maxzul}$	[Nm]	27 - 3240
Nominal torque on output shaft:	T_{2Nzul}	[Nm]	10 - 1100
Max. backlash:	j	[arcmin]	10, 7, [4]
Max. input speed:	$N_{1\maxzul}$	[min ⁻¹]	3000 - 4500

The operating mode is S5. Please contact us if you intend to use other operating modes.

[Catalogues and maintenance instructions](#)

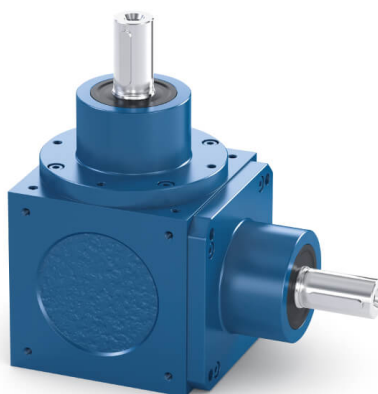
[2D and 3D data](#)

[Inquiry form](#)

Do you have individual requirements?

We have the right customer-specific solution for you. We look forward to hearing from you.

[Customized solution](#)



K

Angular gearbox with solid shaft with key

Ratios:	i	[-]	1,0 - 6,0
Max. acceleration torque:	$T_{2\maxzul}$	[Nm]	27 - 3240
Nominal torque on output shaft:	T_{2Nzul}	[Nm]	10 - 1100
Max. backlash:	j	[arcmin]	10, 7, [4]
Max. input speed:	$N_{1\maxzul}$	[min ⁻¹]	3000 - 4500

The operating mode is S5. Please contact us if you intend to use other operating modes.

[Catalogues and maintenance instructions](#)

[2D and 3D data](#)

[Inquiry form](#)

Do you have individual requirements?

We have the right customer-specific solution for you. We look forward to hearing from you.

[Customized solution](#)



MK

Angular gearbox with solid shaft with key

Ratios:	i	[-]	1,0 - 6,0
Max. acceleration torque:	$T_{2\maxzul}$	[Nm]	27 - 3240
Nominal torque on output shaft:	T_{2Nzul}	[Nm]	10 - 1100
Max. backlash:	j	[arcmin]	10, 7, [4]
Max. input speed:	$N_{1\maxzul}$	[min ⁻¹]	3000 - 4500

The operating mode is S5. Please contact us if you intend to use other operating modes.

[Catalogues and maintenance instructions](#)

[2D and 3D data](#)

[Inquiry form](#)

Do you have individual requirements?

We have the right customer-specific solution for you. We look forward to hearing from you.

[Customized solution](#)



LV

Angular gearbox with solid shaft with key

Ratios:	i	[-]	1,0 - 6,0
Max. acceleration torque:	$T_{2\maxzul}$	[Nm]	27 - 3240
Nominal torque on output shaft:	T_{2Nzul}	[Nm]	10 - 1100
Max. backlash:	j	[arcmin]	10, 7, [4]
Max. input speed:	$N_{1\maxzul}$	[min ⁻¹]	3000 - 4500

The operating mode is S5. Please contact us if you intend to use other operating modes.

[Catalogues and maintenance instructions](#)

[2D and 3D data](#)

[Inquiry form](#)

Do you have individual requirements?

We have the right customer-specific solution for you. We look forward to hearing from you.

[Customized solution](#)



LS

Angular gearbox with solid shaft with key

Ratios:	i	[-]	1/1,5 - 1/2,0
Max. acceleration torque:	$T_{2\maxzul}$	[Nm]	45 - 2160
Nominal torque on output shaft:	T_{2Nzul}	[Nm]	23 - 720
Max. backlash:	j	[arcmin]	10, 7, [4]
Max. input speed:	$N_{1\maxzul}$	[min ⁻¹]	3000 - 4500

The operating mode is S5. Please contact us if you intend to use other operating modes.

[Catalogues and maintenance instructions](#)

[2D and 3D data](#)

[Inquiry form](#)

Do you have individual requirements?

We have the right customer-specific solution for you. We look forward to hearing from you.

[Customized solution](#)

Are you looking for further spiral bevel gearboxes?

[Overview spiral bevel gearboxes](#)