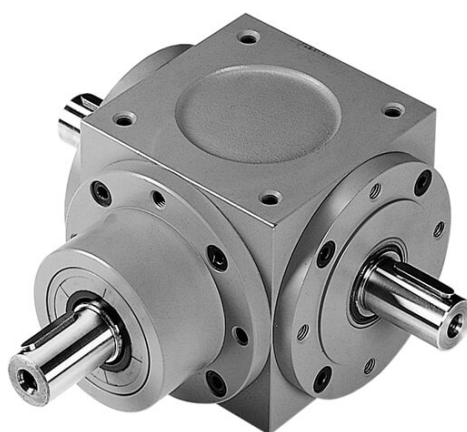


[Home](#) / [Product information](#)

Product information

You will find all product discontinuation announcements and information about old gearbox versions here.

[Product line cancellations November 2012](#) [Product line cancellations February 2006](#)



Spiral bevel gearboxes - old version

Technical data

Type:	K, L, H, LS, LV, MK, ML, MH, UL
Size	0, 1, 2, 23, 25, 30, 37, 4, 5, 6
Ratio: i [-]	0, 5 - 6
Lubrication:	Grease- or oil lubrication

The operating mode is S5. Please contact us if you intend to use other operating modes.

[Inquiry form](#)

Do you have individual requirements?

We have the right customer-specific solution for you. We look forward to hearing from you.



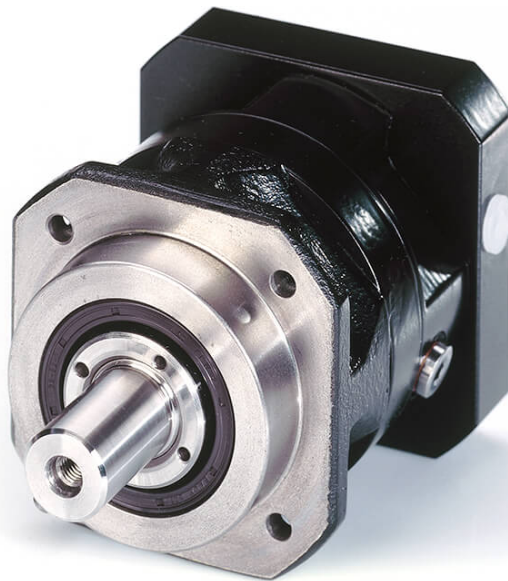
Low backlash planetary gearboxes - old version

Planetary gearboxes

Type:	PS, MPS, MPSH		
Size:	0, 1, 2, 3		
Ratio:	4 - 143		
Max. acceleration torque:	$T_{2maxzul}$	[Nm]	50 - 500 Nm
Lubrication:	Oil lubrication		

The operating mode is S5. Please contact us if you intend to use other operating modes.

[Inquiry form](#)



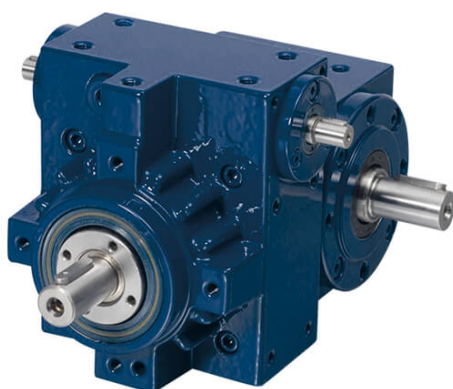
Low backlash planetary gearboxes - old version

Planetary gearboxes

Type:		MPR, MPRN
Size:		00, 01, 02, 03
Ratio:	i [-]	3 - 100
Max. acceleration torque:		- 1000 Nm
Lubrication:		Oil lubrication

The operating mode is S5. Please contact us if you intend to use other operating modes.

[Inquiry form](#)



Phase shifter gearboxes - old version

Phase shifter gearboxes

Type:		UE, UEF, LUE, LUEF
Size:		1, 2, 23, 25, 30, 4, 5
Ratio:		1 - 3
Max. acceleration torque:	$T_{2maxzul}$ [Nm]	50 - 2500 Nm
Lubrication:		Oil lubrication

The operating mode is S5. Please contact us if you intend to use other operating modes.

[Inquiry form](#)

Do you have individual requirements?

We have the right customer-specific solution for you. We look forward to hearing from you.

[Catalogues and maintenance manuals](#)

