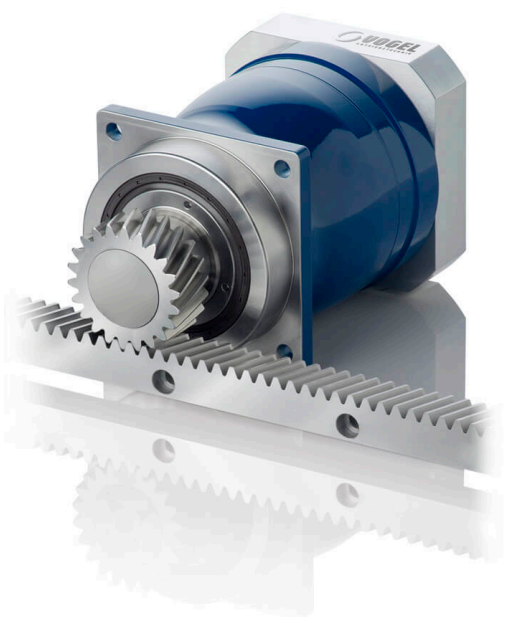


## Rack & pinion drives

The combination of low-backlash planetary gearboxes with high-precision pinions and toothed racks is extremely energy-efficient, precise, dynamic and convincing thanks to the long service life. Rack and pinion drives from VOGEL enable even machine tool gantries weighing tonnes to be accelerated dynamically and positioned accurately down to the  $\mu\text{m}$  range. Customers benefit from the decades of development, manufacturing and consultation skills acquired who deliver to a high quality level which is recognised the world over.



### MPRW

Rack & pinion drive

|  |                              |             |
|--|------------------------------|-------------|
| Max. permissible feed force:                             | $F_{u_{\text{maxperm}}}$ [N] | up to 16000 |
| Max. permissible speed: (Depending on the gearbox ratio) | $v_{\text{maxperm}}$ [m/min] | up to 385   |
| Module:  | [mm]                         | 2 - 4       |
| Quality pinion:  | Q                            | 5           |
| Quality rack:  | Q                            | 5           |

The operating mode is S5. Please contact us if you intend to use other operating modes.

[Catalogues and maintenance instructions](#)

2D and 3D data upon request

[Inquiry form](#)

### **Do you have individual requirements?**

We have the right customer-specific solution for you. We look forward to hearing from you.

[Customized solution](#)



## **MPRN**

Rack & pinion drive

|   |                        |            |
|---|------------------------|------------|
| Max. permissible feed force:                            | $F_{u_{\maxperm}}$ [N] | up to 9000 |
| Max. permissible speed:(Depending on the gearbox ratio) | $v_{\maxperm}$ [m/min] | up to 290  |
| Module:   | [mm]                   | 2 - 3      |
| Quality pinion:   | Q                      | 7          |
| Quality rack:   | Q                      | 6          |

The operating mode is S5. Please contact us if you intend to use other operating modes.

[Catalogues and maintenance instructions](#)

2D and 3D data upon request

[Inquiry form](#)

### **Do you have individual requirements?**

We have the right customer-specific solution for you. We look forward to hearing from you.

[Customized solution](#)

## **The choice is yours:**

### **Plug & Move**

Rack and pinion drive with pinion pre-mounted on the output shaft of the gearbox. You benefit from minimum assembly work and fast start-up.

### **Modular system**

Purchase the rack and pinion drive as individual components - as a gearbox with matching pinion and toothed rack. The components can be configured into a system quickly and economically.

### **Individual customized solutions**

You benefit from the flexibility of two specialist companies with development skills and a range of components that is quite unique in the world. We do everything in our power to ensure you get the just the rack and pinion drive you require. From customising through more minor application-specific adaptation of our range components through adaptation of design sizes to the development of tailor-made solutions.

### **Accessories directly from the OEM**

All assembly pieces can be purchased optionally.

## **We look forward to hearing from you.**

Do you have questions about our products or would you like personal consultation? You can find the right contact person for you here.

[Go to contact persons](#)